

Schwerpunkte und Trends im IdM - Beobachtungen eines Anbieters

GenericIAM

Frankfurt, 04.12.2009



Roland Awischus
Beta Systems AG

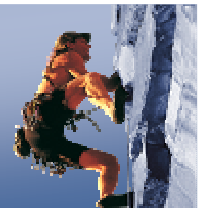
■ Agenda

Identity Management Strategy Map

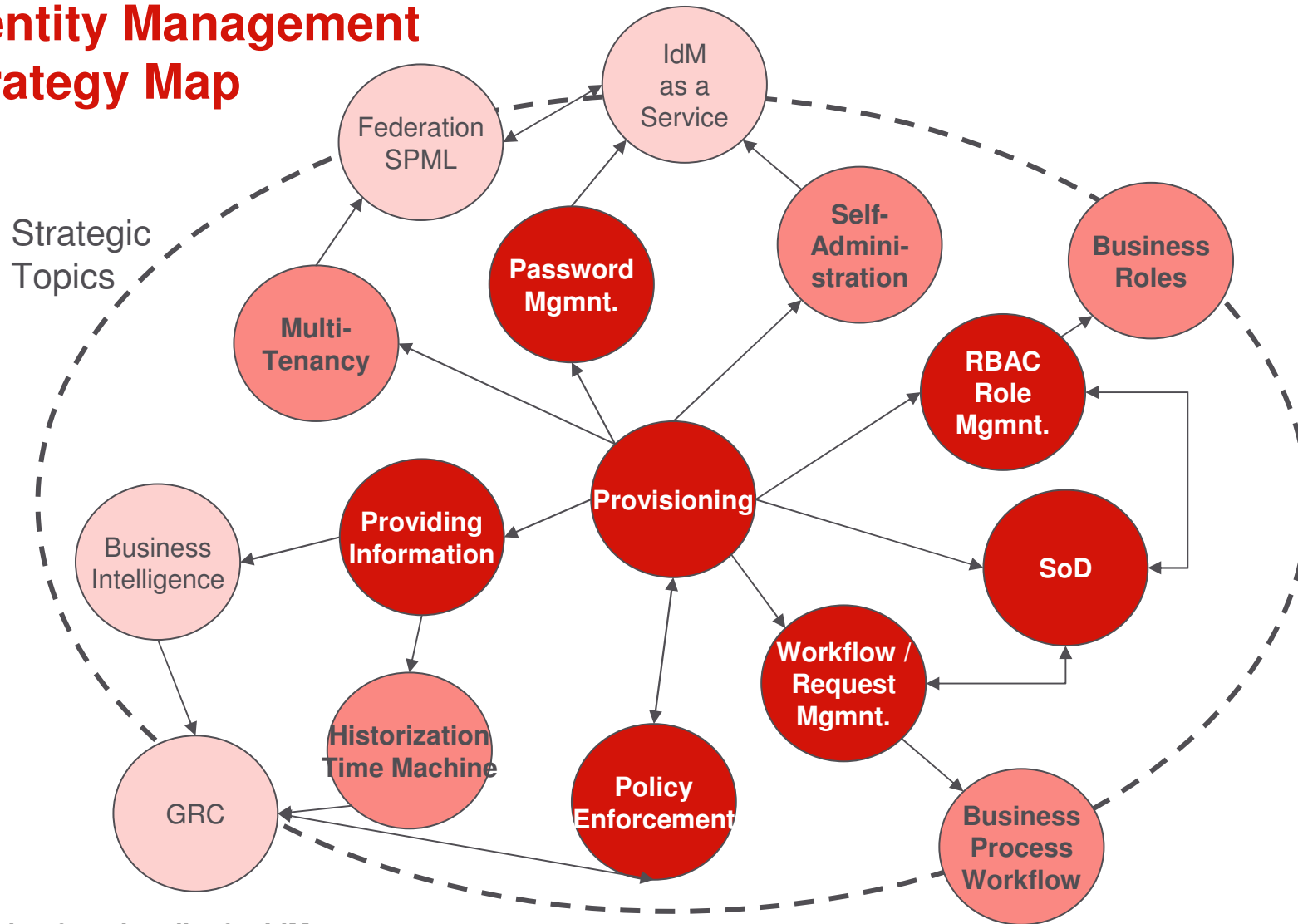
Requirements to Identity Management

- Business Process Workflow
- Webshop
- Role Lifecycle
- Reporting – Auditing – Attestation - GRC
- Access Management
- Federation
- Cloud Computing

[25+ years of software innovation]



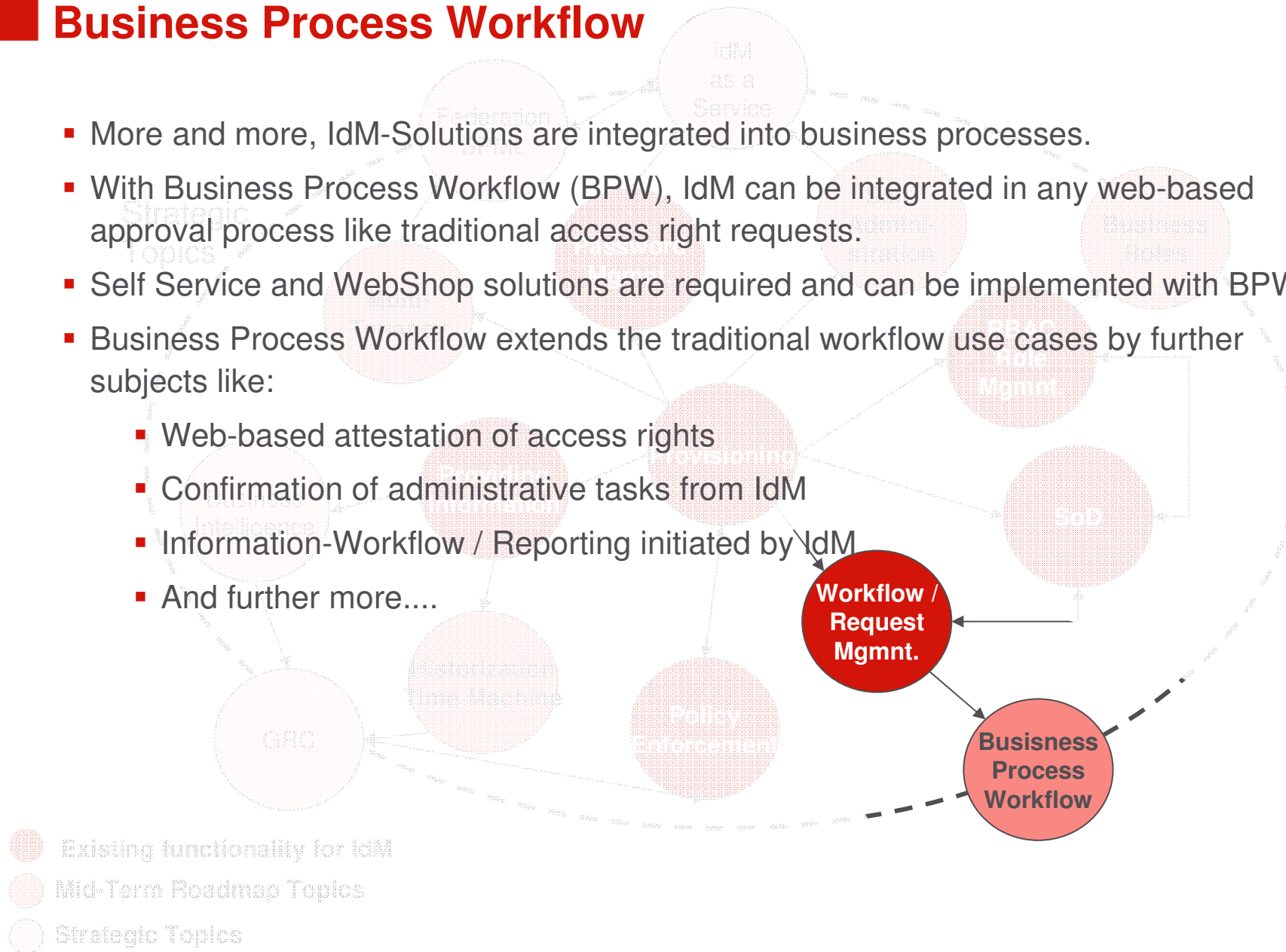
Identity Management Strategy Map



- Existing functionality for IdM
- Mid-Term Roadmap Topics
- Strategic Topics

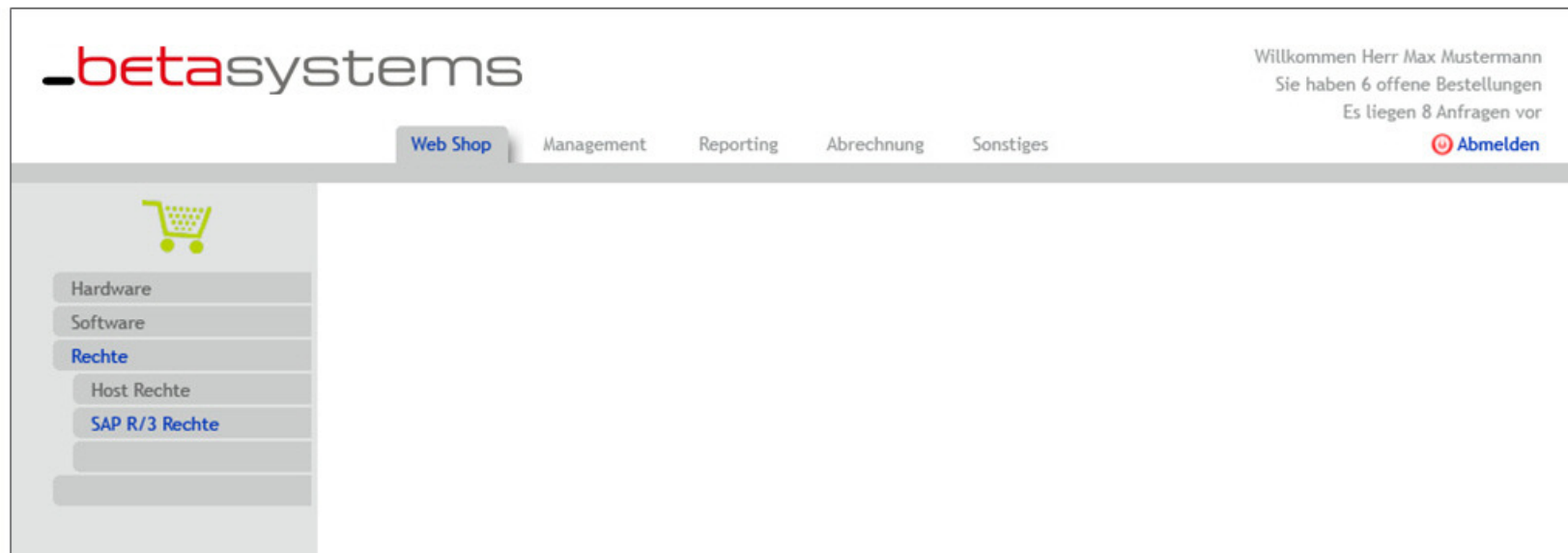
Business Process Workflow

- More and more, IdM-Solutions are integrated into business processes.
- With Business Process Workflow (BPW), IdM can be integrated in any web-based approval process like traditional access right requests.
- Self Service and WebShop solutions are required and can be implemented with BPW
- Business Process Workflow extends the traditional workflow use cases by further subjects like:
 - Web-based attestation of access rights
 - Confirmation of administrative tasks from IdM
 - Information-Workflow / Reporting initiated by IdM
 - And further more....



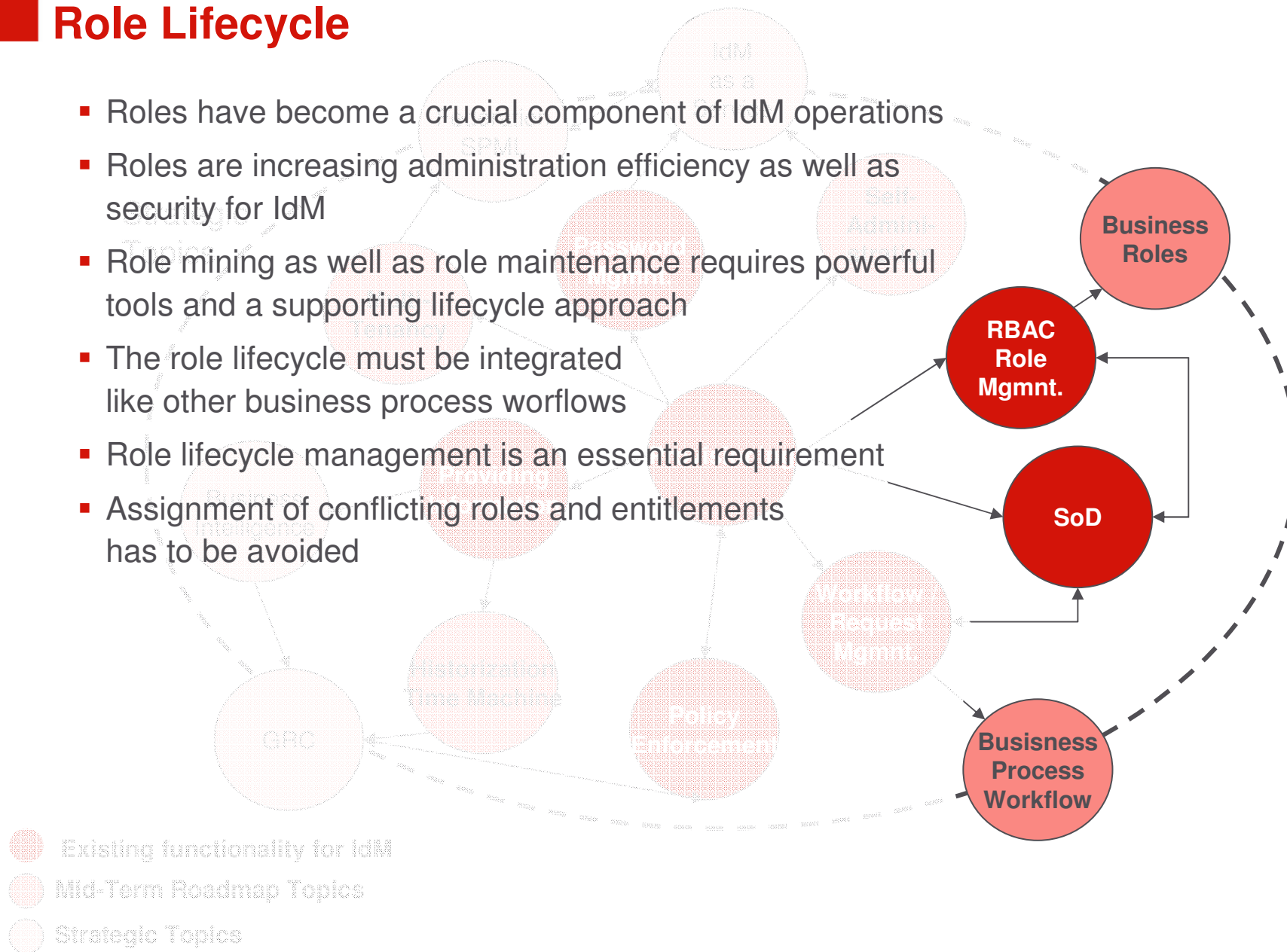
■ WebShops – Access Rights as a procurement process ■

- Web services for end-users can be offered and integrated into enterprise portal systems.
- Services on business level allow e.g. the order process of access rights similar to procurement requests for mobile phones or office equipment.
- SPML-interfaces allow the standardised communication between IdM and third-party applications, that control certain administration tasks.



Role Lifecycle

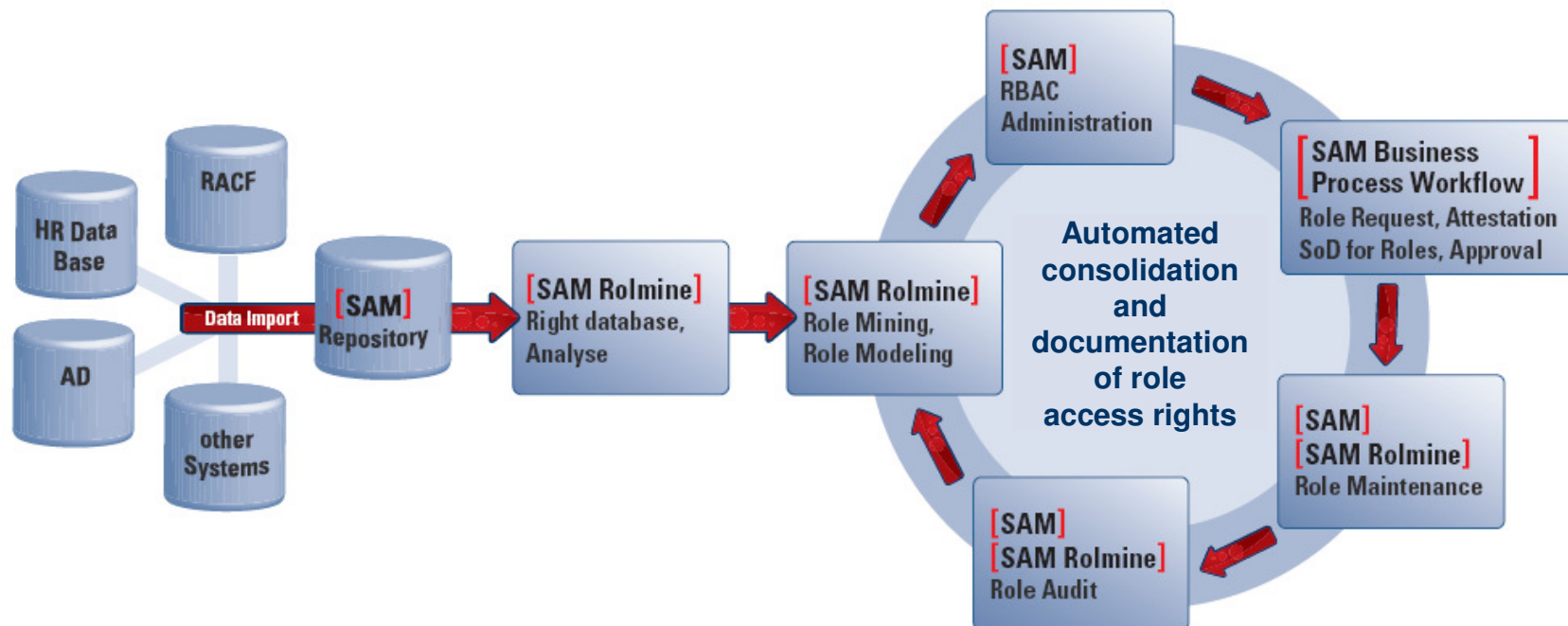
- Roles have become a crucial component of IdM operations
- Roles are increasing administration efficiency as well as security for IdM
- Role mining as well as role maintenance requires powerful tools and a supporting lifecycle approach
- The role lifecycle must be integrated like other business process workflows
- Role lifecycle management is an essential requirement
- Assignment of conflicting roles and entitlements has to be avoided



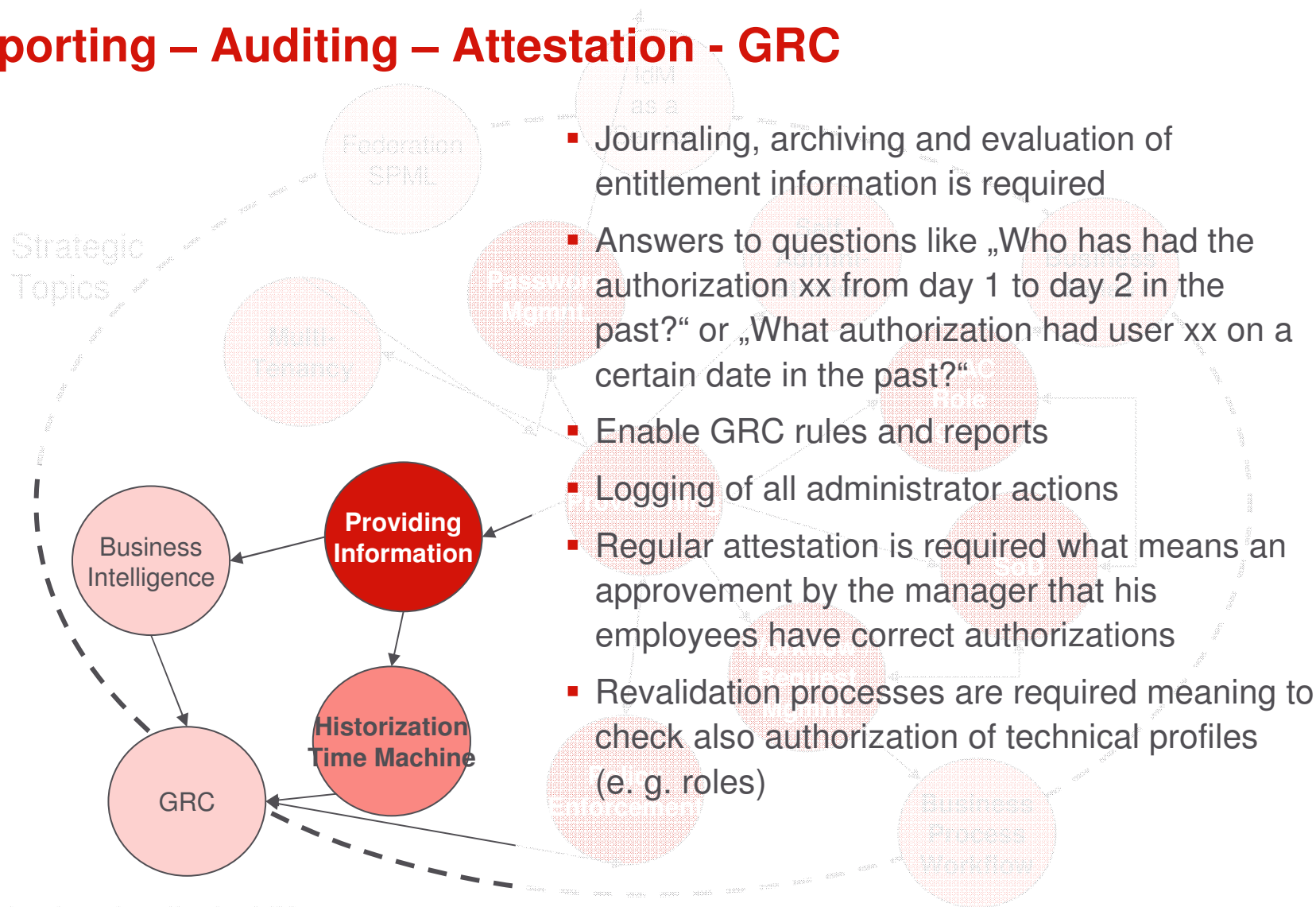
Identity Management – Role Lifecycle

- The combination of
 - Role mining, analysis and maintenance
 - IDM as a role based access right administration
 - BPW for web-based user interaction, and
 - Role lifecycle documentation

...supports the full role lifecycle process!

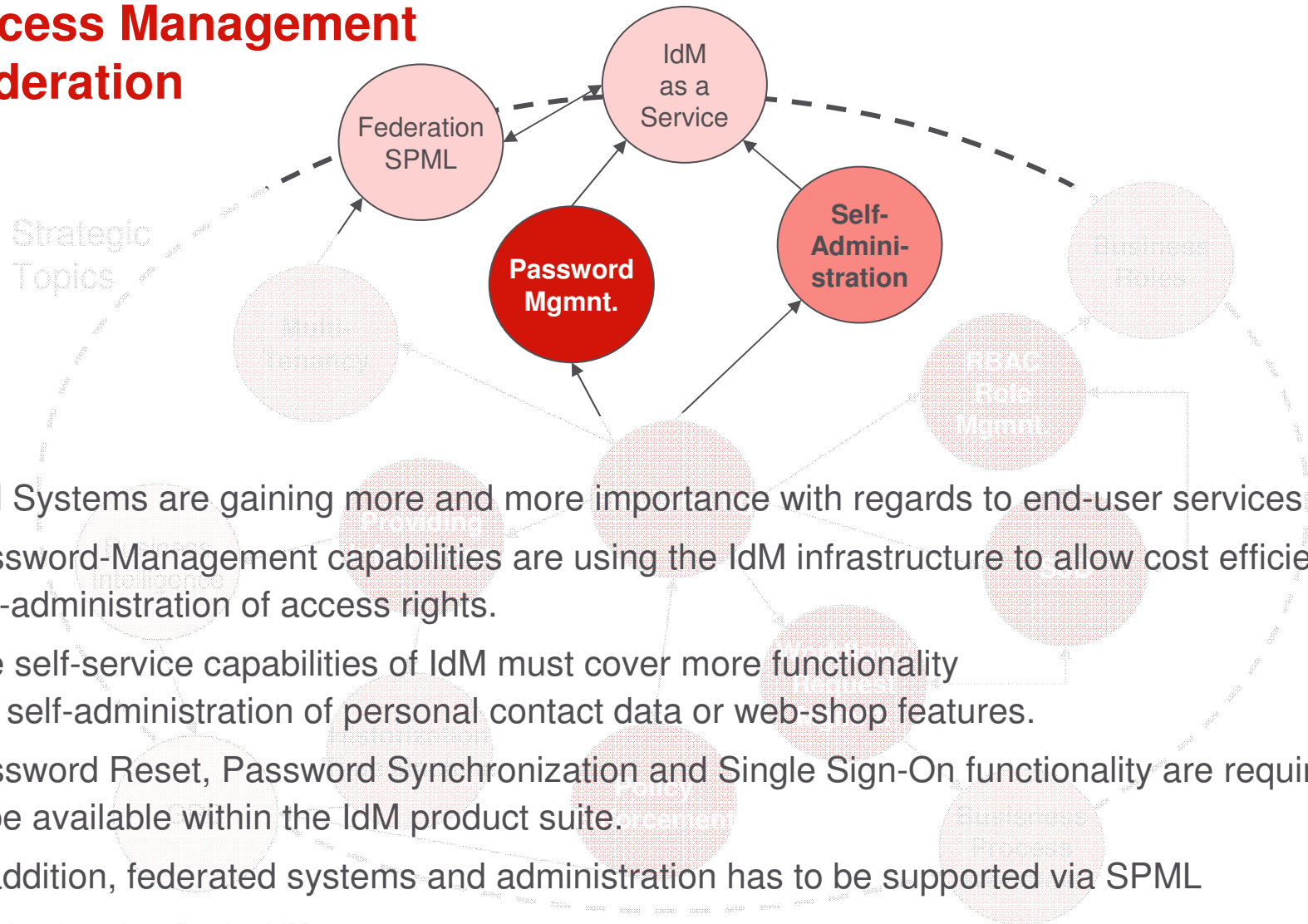


Reporting – Auditing – Attestation - GRC



- Journaling, archiving and evaluation of entitlement information is required
- Answers to questions like „Who has had the authorization xx from day 1 to day 2 in the past?“ or „What authorization had user xx on a certain date in the past?“
- Enable GRC rules and reports
- Logging of all administrator actions
- Regular attestation is required what means an approval by the manager that his employees have correct authorizations
- Revalidation processes are required meaning to check also authorization of technical profiles (e. g. roles)

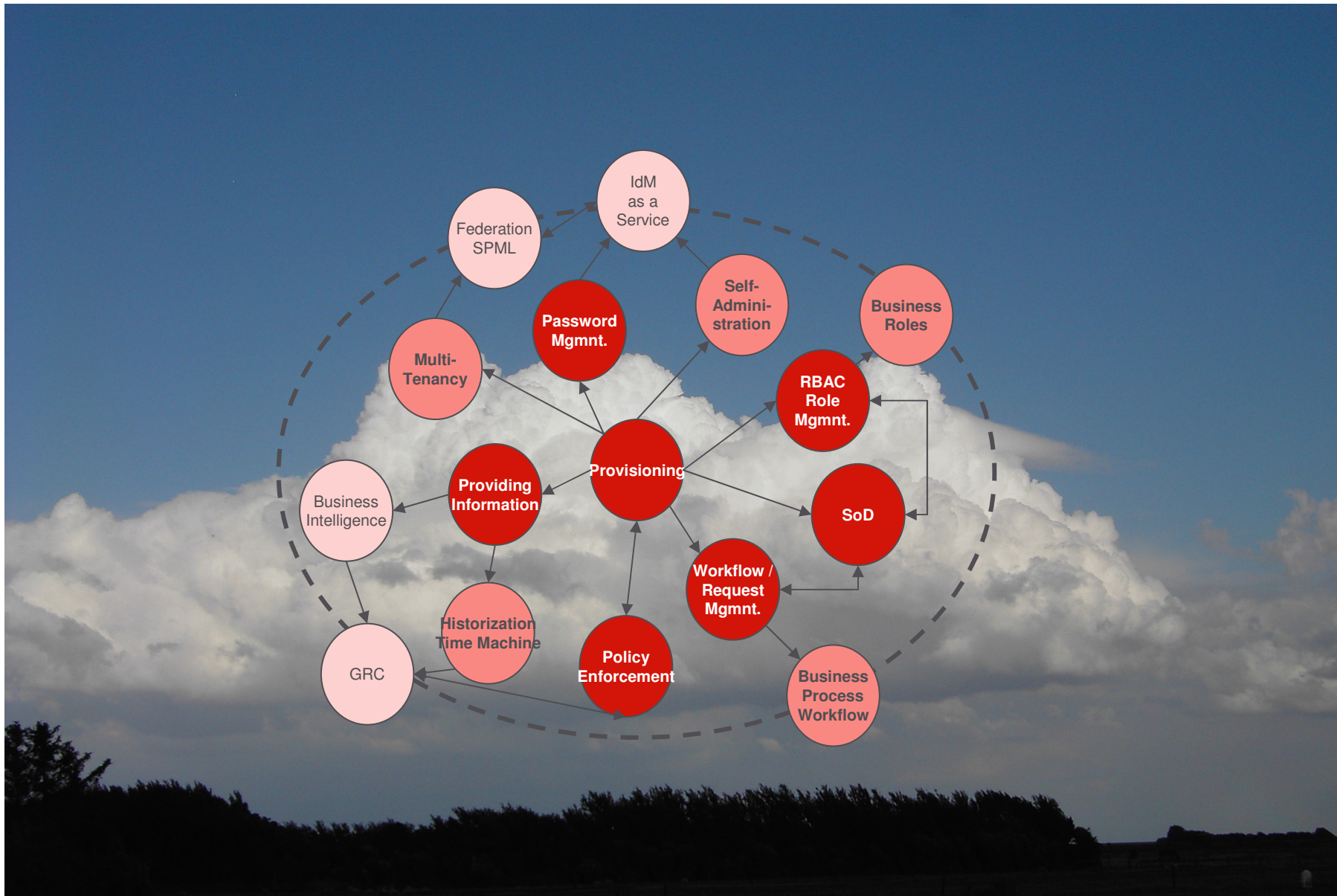
Access Management Federation



- IdM Systems are gaining more and more importance with regards to end-user services
- Password-Management capabilities are using the IdM infrastructure to allow cost efficient self-administration of access rights.
- The self-service capabilities of IdM must cover more functionality like self-administration of personal contact data or web-shop features.
- Password Reset, Password Synchronization and Single Sign-On functionality are required to be available within the IdM product suite.
- In addition, federated systems and administration has to be supported via SPML

- Existing functionality for IdM
- Mid-Term Roadmap Topics
- Strategic Topics

Identity Management and Cloud Computing



■ Thank you
for your attention

